



Coates Wildlife Tours
Specialist in Nature Tours since 1986

Trip Dossier

12 Day Central Australian Expedition



Camping Small Group Tour - Max 10 passengers
Alice Springs to Alice Springs 22 June - 3 July 2021

(Max. 6 participants in 2 lead vehicles & 4 participants in 2 tag along vehicles)

Itinerary Highlights:

- Mac Clark Conservation Reserve is one of the few places on earth where you will find the rare *Acacia peuce*; this tree is only found in three locations worldwide.
- Dalhousie Springs is the perfect spot for a swim; this natural hot spring is large (with steps to get in and out) and the temperature ranges from 38 to 43 degrees celsius
- Finke Gorge National Park covers 46,000 hectares and is home to ancient landscapes and the Finke River (thought to be one of the oldest rivers in the world)
- Stunning Palm Valley has a diverse range of unique flora, including the rare Red Cabbage Palm which is a botanic remnant from a time when Central Australia was dominated by tropical forests
- West MacDonnell Ranges National Park, known for its beauty and scenic gorges; the ranges also provide refuge for many plants and wildlife in the area
- Glen Helen is surrounded by mesmerising landscapes and is a great location to view the West MacDonnell Ranges. It is also perfect for a refreshing dip and provides refuge for the local wildlife.

Join us and explore the Northern Territory and South Australian deserts, gorges and the remote outback. It is isolated, mostly untouched, harsh and yet beautiful. The varied landscapes, unique wildlife and endless horizons never ceases to amaze.

Itinerary

Day 1 Alice Springs - Santa Teresa - Mac Clark Conservation Reserve - Old Andado

Leaving early this morning, we head to the small community of Santa Teresa and the Aboriginal Art Centre before moving into the Mac Clark Conservation Reserve which protects rare Acacia Peuce trees. They are only found here and in two other locations in the world, Birdsville and Boulia in Queensland. We then head down the Old Andado Track traversing through mountain ranges, rocky gibber plains, desert sand dunes and floodplains arriving at our first bush camp in the late afternoon.

Accommodation: Bush Camp L D

Day 2 Old Andado – Finke River Crossing – Mount Dare – Dalhousie Springs

This morning we head south crossing the Fink River and the South Australia - Northern Territory border into the Witjira National Park over 120 freshwater mound springs. We will spend three nights at the National Heritage-listed Dalhousie Springs campsite where you can swim in the main spring's warm waters. This area is also home to some unique species of fish such as the Dalhousie hardyhead and other rare aquatic life found nowhere else in the world.

Accommodation: Campsite Dalhousie Springs B L D

Days 3 & 4 Witjira National Park

We will spend two days in the park looking at some of the red mulga, gidgee, coolibah and whitewood trees along the creeks. Rare bird species, like the Australian bustard, the flock bronzewing, and the plains wanderer as well as dingoes, the central bearded dragon, Gould's sand goanna and red kangaroos can be found in the park.

Accommodation: Campsite Dalhousie Springs B L D

Day 5 Dalhousie Springs – Oodnadatta – Marla

This morning we will head south, passing through the ruins of Pedirka on the Old Ghan Railway. Then onto Oodnadatta where we will again meet up with the Old Ghan and follow the Oodnadatta Track to Marla.

Accommodation: Campsite Marla B L D

Day 6 Marla – Henbury Meteorites Cons Reserve – Running Waters Area

After breakfast we depart Marla and start our journey north towards Henry Meteorites Conservation Reserve. The reserve contains 12 craters formed by a meteor that hit the earth roughly 4,700 years ago. We observe the craters and explore their surroundings before continuing onto our bush camp.

Accommodation: Bush Camp Running Waters area B L D

Day 7 Running Waters Area to Finke Gorge National Park (Palm Valley campsite)

This morning we will explore Running Waters. It is one of the few permanent waterholes providing a remote haven for plants, fish, birds and animals before we make our way to Finke Gorge National Park. There will be time to stop and look for plants and wildlife along the way. Our camp for the next two nights is in the Palm Valley.

Accommodation: National Park Campsite Palm Valley B L D

Day 8 Palm Valley

We will spend the day exploring the Palm Valley which is home to a diverse range of plants and wildlife that are unique to the area including the Red Cabbage Palm which the valley is named after. We will enjoy some of the bushwalking trails that run alongside the slender palms, as well as the various sandstone amphitheatres, pinnacles and gorges scattered throughout the valley.

Accommodation: National Park Campsite Palm Valley B L D

Day 9 Palm Valley to Glen Helen

After a final exploration of Palm Valley this morning, we make our way to Glen Helen which is a beautiful waterhole edged by red cliffs and is home to Black-footed rock wallabies, euros and reptiles. It's is also an excellent spot for a refreshing dip while enjoying the view of the West Macdonnell Ranges.

Accommodation: Campsite Glen Helen BLD

Days 10 & 11 Glen Helen - West Macdonnell Ranges - Glen Helen

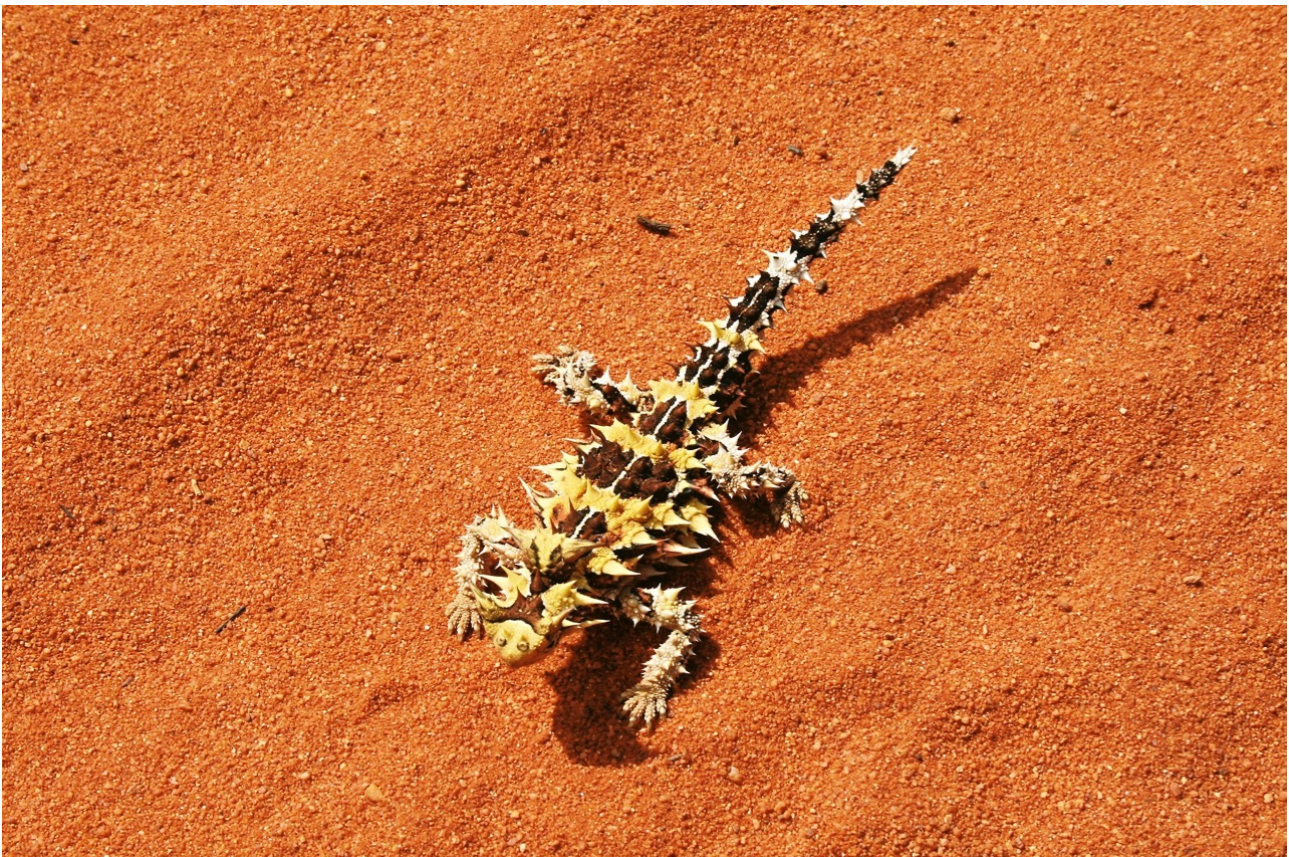
We will spend the next two days exploring Glen Helen, a beautiful waterhole edged by red quartzite cliff and the West Macdonnell Ranges. We will take trail walks, swim in waterholes and enjoy the spectacular scenery (photographers will be delighted). There will be plenty of opportunities for looking at the various flora and fauna.

Accommodation: Campsite Glen Helen BLD

Day 12 Glen Helen to Alice Springs

The adventure ends today with the final drive into Alice Springs following the Namatjira Drive. We will stop and take time to explore Standley Chasm on the way. On arrival in Alice Springs, we will transfer you to your chosen Alice Springs city hotel. BL

NOTE: The above itinerary may be varied according to conditions and advice.



Tour Costs

Cost: \$5,985.00 per person in lead vehicles
\$2,125.00 per person in tag along vehicles
Free Single Supplement

Departs: Alice Springs 22 June 2021
Finishes: Alice Springs 3 July 2021

Max No. Of Participants: 6 passengers in 2 lead vehicles & 4 passengers in 2 tag along vehicles

Tour Payments

Deposit: At time of booking \$500.00 per person

Final Payment: On or before 23 May 2021

Note: Deposit is non-refundable. The final payment is non refundable if canceled within 30 days of the departure date. Travel Insurance covering all payments is available and is strongly recommended.

Included

- Two well-maintained 4WD vehicles;
- 2 crew members - a Naturalist/Driver Guide and Driver/Cook;
- Easy-to-erect tents and camp chairs with armrests;
- A self-inflating air mattress and stretcher bed;
- All eating utensils;
- Meals as per itinerary: B (breakfast), L (lunch), D (dinner);
- Campsite fees;
- Morning teas;
- All national park entrance fees;
- Travel permits as required.

Not Included

- Alcoholic & carbonated drinks (you are welcome to bring your own);***
- Pillows;
- Sleeping bags
- Travel insurance (very strongly recommended);
- Travel expenses to and from Alice Springs;
- Pre and post tour accommodation;
- All other private expenses (e.g. laundry, telephone calls, camera batteries);
- Entrance fees or activity costs other than those included above.
-

*** NOTE: Due to the Federal Government's intervention with Aboriginal communities alcohol has been totally banned on all Aboriginal land. Much of this trip will be spent traveling through these lands and we are required to abide by these laws.

Special Offers

Book Multiple Tours

Save 5% per person on the second and subsequent tours if more that one tour is booked in the same year. Applies to the cheaper tours.

Loyalty Program

Save \$100 per person on your second, third and fourth tour. Save \$150 per person when you have travelled on 5 or more tours. Tours must be operated by Coates Wildlife Tours.

Please note: Loyalty discount can be combined with other offers.
Discounts are only available on bookings made directly with Coates.

Tour Information

Tour Leader: TBA

Naturalist Guide: TBA

Vehicle & Equipment:

Our vehicles for the tour will consist of two Toyota 4WD Prado's with trailers or similar. All the necessary camping equipment is provided. Passengers are required to supply their own sleeping bags and pillows, or a sleeping bag can be purchased from us for \$100.00. Purchased Sleeping bags can be taken home after the tour or they can be given back to us and we will donate them to charity.

Tag Along Participants:

If requested when booking we can supply tents, seating and eating utensils but they will need to be carried in your own vehicle.

Single Travellers:

On Coates Wildlife Camping Tours single travellers will be allocated a tent to themselves. If you are travelling with a friend and would like to share a tent please let us know.

Accommodation:

Accommodation on this tour is a combination of bush camps and campsites.

Bush camps are at locations chosen by the tour guide for their suitability and natural benefits. There are usually no facilities apart from a long-drop bush toilet. We carry adequate water for washing.

National Park campsites are operated by the Parks and Wildlife Commission of the NT (PWCNT). They usually provide a mix of flushing or long-drop toilets; fire rings and clearly defined camping areas. Some campsites have showers.

Private campsites vary significantly. Some have full ablution blocks with showers and flushing toilets; others only provide a long-drop toilet.

Meals:

All meals are included throughout the tour - ie breakfast, lunch, dinner and morning teas. There will also be a plentiful supply of fresh fruit available throughout the day. Special dietary requirements can usually be catered for. Please contact the office if you have a dietary requirement, as a surcharge may apply.

Trek Grading:

We will undertake light to medium bush walking on most days. All walks are optional and will be able to be conducted at your own pace. There may also be some optional rock scrambling.

Weather:

Days are expected to be dry and warm with temperatures around 20 - 25 degrees Celsius. The nights can be cold, with minimum temperatures around 0 - 8 degrees Celsius.

Clothing:

A suggested list of items to bring on tour will be included with our pre-departure information, sent to you on full payment of tour costs. Generally, comfortable, casual clothing is recommended. Light shirts and T-shirts are appropriate for during the day and warmer jumpers and jackets may be required for the evenings. Sturdy and comfortable walking shoes or boots are essential.

To make a booking or for further information please contact

Tom or Sylvia Grove at Coates Wildlife Tours

P.O. Box 4502

Myaree BC, Myaree, WA 6960

Phone: 08 9330 6066 Free Call Country & Interstate: 1800 676 016

Email: coates@iinet.net.au Web: www.coateswildlifetours.com.au

Terms and Conditions

Adina Nominees Pty Ltd (ACN 075 427 324) as trustee for the Grove Family Trust trading as Coates Wildlife Tours (hereinafter referred to as the tour operator) shall not be liable for any accident, injury, sickness, delay, irregularity or damage however caused or arising during any tour under its management or otherwise. Tours are often safari trips to isolated areas; they may include off-road driving, bushwalking, snorkelling, swimming and other activities. These, along with wildlife interactions, planned or otherwise involve a certain degree of risk. All travel involves some measure of personal risk that each passenger has to determine and accept.

Tour participants should be in reasonable health and fitness and be carrying all required medications in ample quantities. Medical clearance from a registered medical practitioner may be required for participants wishing to join some tours. Some activities like scenic flights, boat cruises, helicopter flights are not operated by the tour operator, nor by persons or companies associated with the tour operator and may involve inherent risk of injury, death, accident and loss. Passengers assume all risks concerning any misadventure death, injury or loss which occurs during or as a result of any such activity.

Should the tour operator deem it desirable for climatic or other reasons whatsoever to amend or vary any itinerary, they may do so by shortening or varying the trip in which case the participant will make no objection or claim for compensation.

The tour operator and its employees are unable to guarantee exact arrival and departure times and are not liable for any failure to make connections with any other services.

The tour operator does not own or operate any third-party suppliers of air transportation, hotels, restaurants, cruise craft or local sightseeing companies. The tour operator is not responsible for any loss or expense due to overbooking of flights, accommodations, default of any third parties or any other cause beyond its control. The tour operator takes all reasonable care in selecting these operators; it cannot accept responsibility for the operator's conduct or the conduct of their employees or agents or for any ramifications of that conduct.

While all care is taken, the tour operator does not accept liability for loss or damage to baggage, sickness or injury, or additional expenses caused by factors beyond their control.

All care is taken to ensure this document is correct at the time of printing. Prices and services, as shown in the trip dossiers and website are however subject to change or withdrawal without notice.

BOOKING DETAILS

DEPOSIT: See the relevant trip dossiers for the amount required.

FINAL PAYMENT: In most cases, final payment is required at least 30 days before departure. However, some tours may require payment up to 4 months before departure. Please refer to the tour's trip dossier for exact details.

Payments can be made by Cheque, Direct Deposit, Visa or Mastercard.

N/B Visa and Mastercard payment will incur an additional bank credit card fee of 1.5%

CANCELLATIONS

Coates Wildlife Tours reserves the right to cancel any tour in the event of minimum numbers not being reached, in which case all amounts of money will be refunded in full.

Coates Wildlife Tours will not be considered to be in breach of this contract due to a delay or cancellation caused by a Force Majeure. "Force Majeure is any circumstance which is outside our reasonable control.

In these circumstances, Coates Wildlife Tours will use our best endeavour to re-schedule the tour to a date within 12 months of the original date. Coates Wildlife Tours shall not be held liable for amounts that cannot be retrieved from third parties.

In respect of cancellations by a passenger, specific to the Central Australian Expedition the following cancellation time or penalties are in place plus any costs charged by other parties involved with the Tour will apply: -

Deposits are non-refundable for all tours at any time.

Where written notice is received:

Before 23 May 2021: Deposit is non-refundable however any other payments may be refunded

On or between 23 May 2021 and 22 June 2021: Full tour cost is non-refundable.

No refunds are considered from the day the Tour starts.

INSURANCE

We strongly recommend that travel insurance against imposition of cancellation fees, loss or damage to baggage and extra costs arising from injury or illness be affected.

GENERAL INFORMATION

EQUIPMENT: - Transport by an air-conditioned custom built 4WD tour coach, minibus or 4WD vehicle; whichever is appropriate for the tour. Camping equipment suitable for each tour (except sleeping bags and pillows) is provided. A second vehicle may accompany the group on tours to remote areas. In the case of breakdown or other unforeseen circumstances effecting the vehicle or guide, the operator reserves the right to substitute vehicles and guides other than those specified, to ensure the operation of a tour.

GENERAL INFORMATION CONT.

SEAT ALLOCATION: - Seats on tour vehicle are not pre allocated. To ensure all participants get to enjoy forward positioned and window seats we have incorporated a daily seat rotation system.

LUGGAGE: - Please note that due to health and safety requirements luggage on tour is limited to one medium sized, soft sided bag per person. The sum of its length, width and height is not to exceed 140 cm. The maximum weight of the bag should not to exceed 15 kilograms. A small day pack is also permitted. International tours, some island tours and the Kimberley Coastal Cruises luggage limits may vary, please see the respective tours trip dossier for specific weight maximums.

WILDLIFE: - Sighting of wildlife mentioned in the itineraries cannot be guaranteed as they are wild and therefore free to come and go as they please.

WILDFLOWER DISPLAYS: - Cannot be guaranteed as they are dependent on seasonal rains.

MEAL SYMBOLS: - B = Breakfast, L = Lunch, D = Dinner

GROUP SIZES: - Minimum and maximum numbers apply to all tours. Generally, tours have a maximum of 12 passengers. A camp cook and a naturalist leader will accompany camping groups with more than 6 passengers.